



**Philippa Beale**

*Imagining Trees*

London 2020

**COVER**

*The Lake at Vaux* 2020  
silkscreen on linen | 70 x 100cm

**DETAIL**

# Philippa Beale

*Imaging Trees*

29 October - 5 December 2020



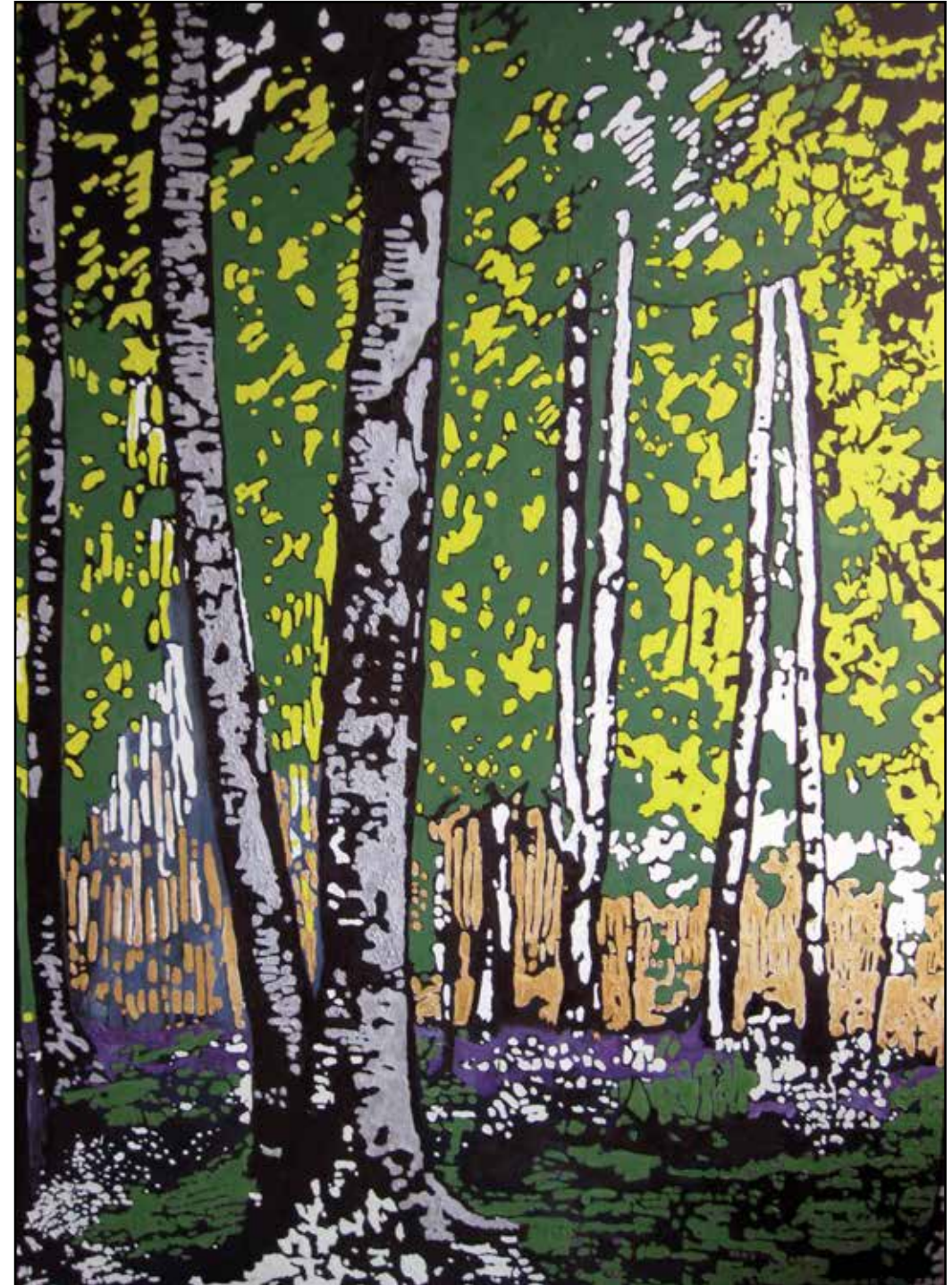
**183-185 Bermondsey Street London SE1 3UW**

abps@project-space.london 0203 441 5152



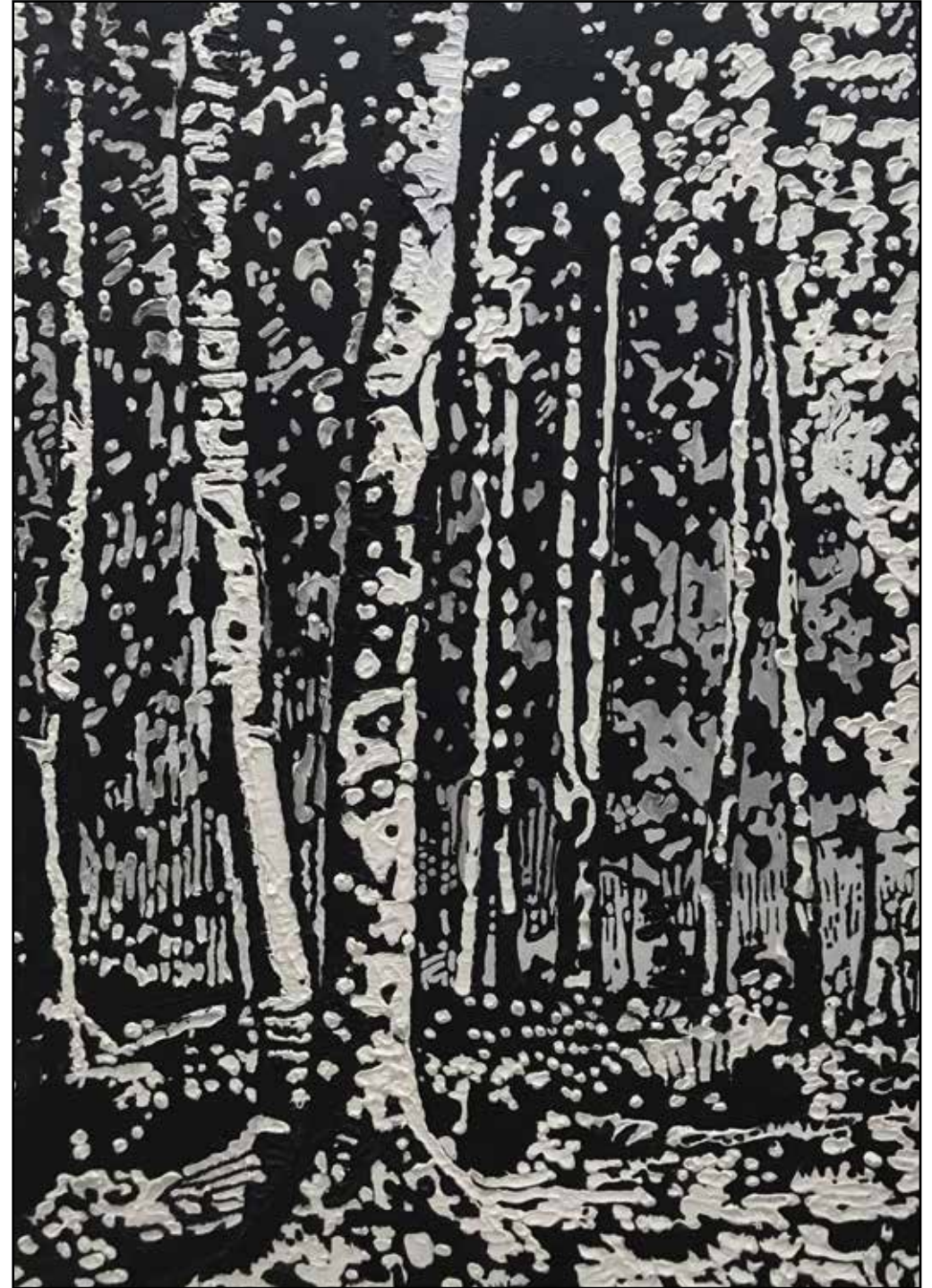
*Paintings*

*On Each Side of the River Stood the Tree of Life 2020*  
*'And leaves of the tree are for the healing of nations' (Revelations 22.2)*  
oil on canvas | 187 x 137cm





*Sessile Oaks* 2019  
oil on canvas | 68 x 60cm



*Food and Fuel* 2019  
oil on canvas | 70 x 120cm





*A Walk in the Snow 1944*  
*Dedicated to Henri Bergson, who rose from his bed during his final illness to register*  
*as a Jew in protest against the transportation of Jews from France*  
oil on canvas | 122 x 187cm



*The Lake at Vaux* 2020  
silkscreen on linen | 80 x 80cm





*Still Life with a Box of Windfall Apples* 2020  
silkscreen on linen | 80 x 80cm

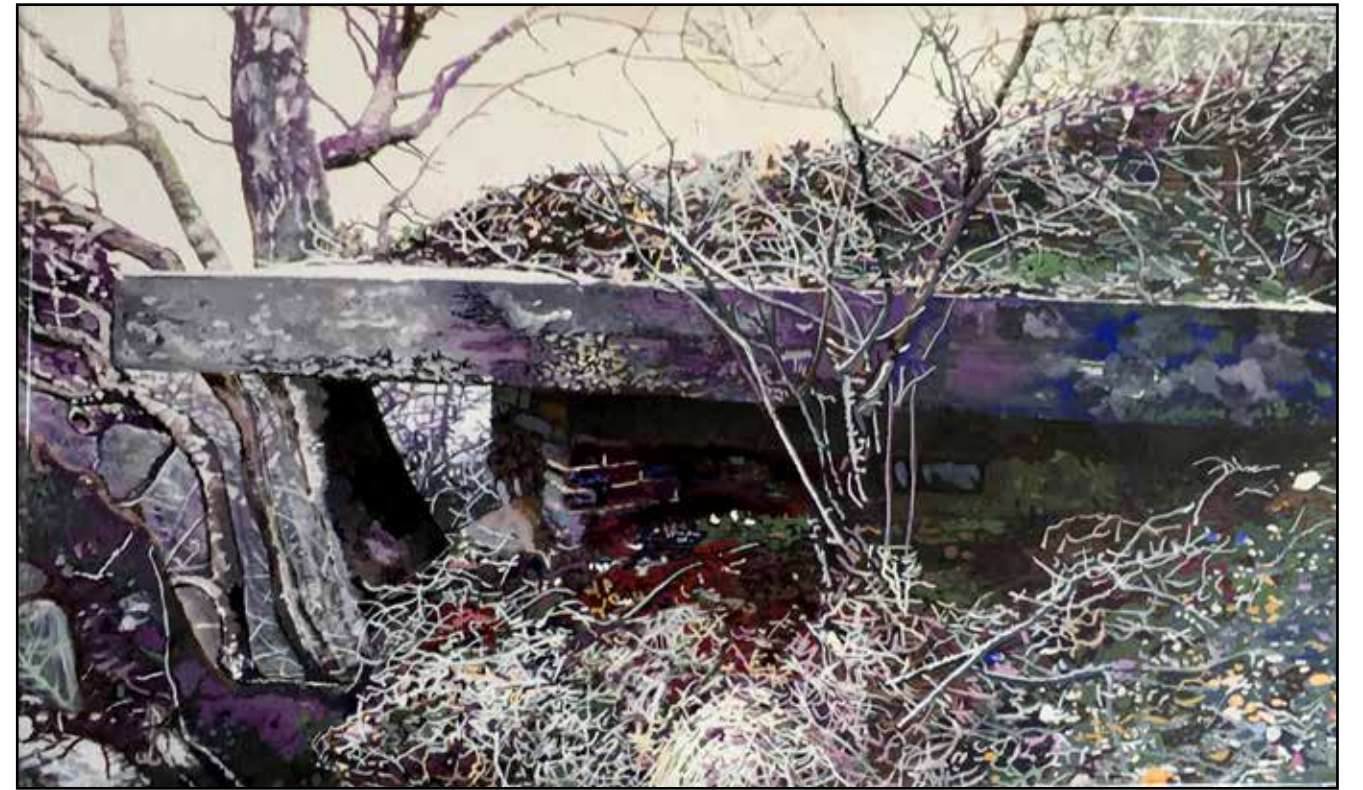




*Monday/Tuesday* 2019  
Acrylic on canvas | 55 x 81cm



*Dover Quad Pill Box, off A 28, Kent 2020*  
oil on canvas | 30 x 56cm





*Dover Quad WWII, Folkstone Road, Dover* 2020  
mixed media on canvas | 65 x 86cm



*Dover Quad Pill Box, Kent* 2020  
oil on canvas | 45 x 65cm





*Poplars Across the Road*  
oil on canvas | 98 x 73cm

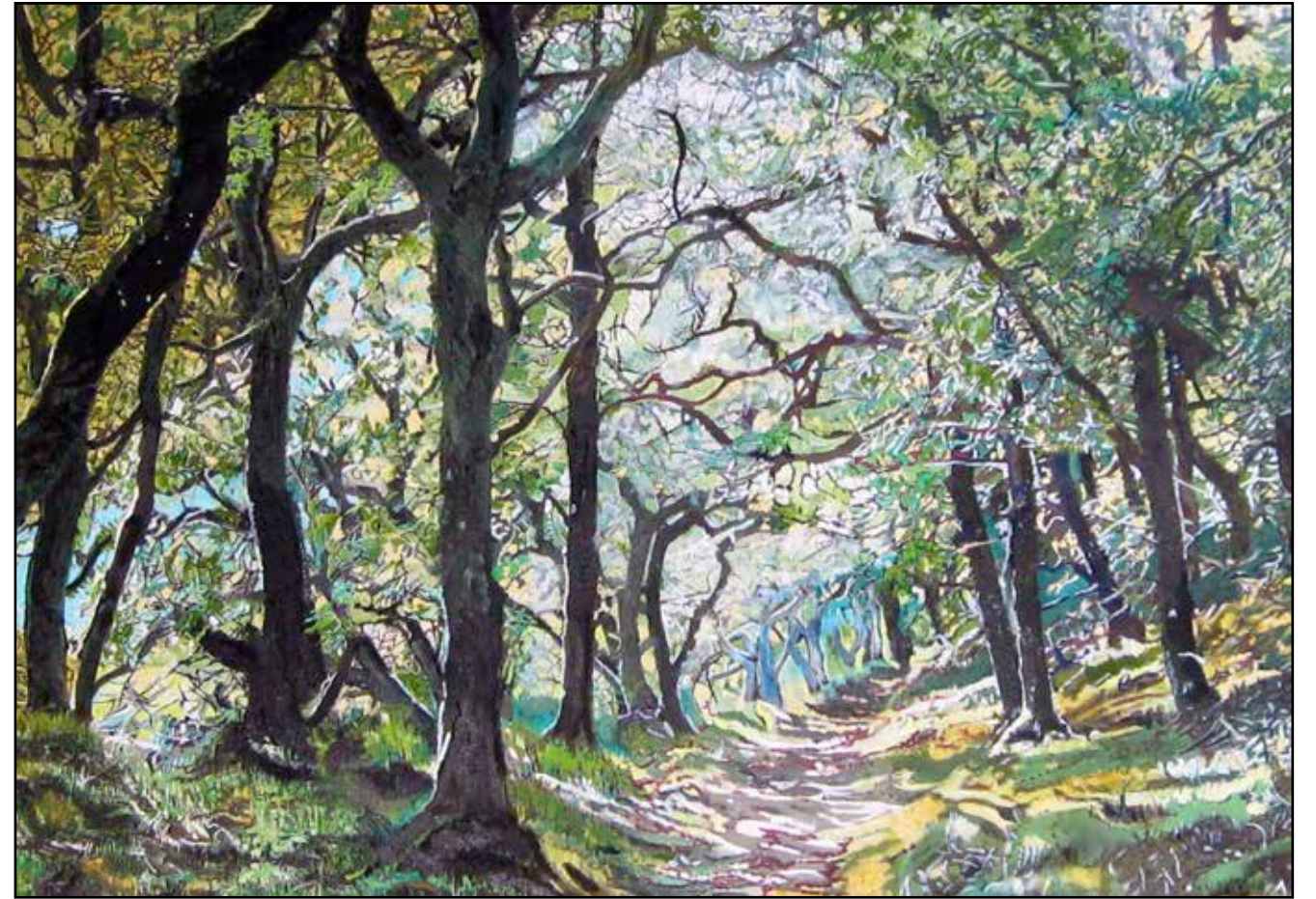


*Food and Fuel, The Trees in Spring Across the Road* 2019  
oil on canvas | 72 x 39cm





*Bageworthy Wood* 2020  
oil on canvas | 60 x 86cm







*Boxed Set of Six Archival Prints 2020*  
silkscreen | 42 x 59cm each, paper size



# Philippa Beale

## *Imaging Trees*

29 October - 5 December 2020

Philippa Beale's work never followed the mainstream concerns of her contemporaries. She wanted her work to be widely accessible, and developed her understanding of semiotics to promote a democratic spectatorship.

Since the 1970s she has focused on the formal and structural aspects of images, while political concerns led her to develop a hybrid style, combining narrative with the concept of consumerism, highlighting the use of art social commentary; whilst projecting the idea of the artist as a social interpreter. Her silkscreened art apotheosised the 'supposed' banality of commercial culture found in advertising.

### BACK COVER

*On Each Side Of The River Stood The Tree Of Life 2020*

oil on canvas | 137cm x 187cm

DETAIL

